

## **Compleat birdnest swing (fine mesh)**

**Article-no.: 7911**

Installation- and maintenance manual



*Example: Multicolor – fine mesh*

# Index

1. Bill of material .....	1
2. Technical data and notes.....	2
3. Installation .....	3
4. Dimensions .....	5
5. Safety- and usernotes.....	6
6. Changes.....	7
7. Replacement parts .....	8
8. Maintenance manual.....	11
Work documentation .....	15

## 1. Bill of material

- 2 post steel Ø 4.5 in x 0.157 x 88.98 in (114,3 x 4 x 2260 mm) powder coated, with lid
- 1 nestswing complete with suspension
- 2 hinge complete mounted

Not included in delivery but needed:

4 pcs. reinforcing steel mat R 188 A

43.31 x 43.31 in (1100 x 1100 mm)

all bent to a basket with 9.45 in (240 mm) high sides.

2 pcs. with a hole for the post.

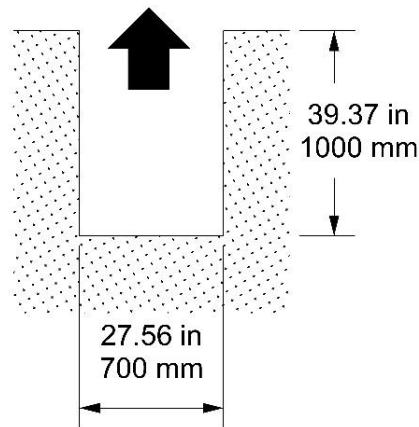
## 2. Technical data and notes

- Impact surface (LxW): 157.48 x 104.33 in  
4000 x 2650 mm
- Maximum fall height: 35.43 in / 900 mm
- Fall area (LxWxH): 157.48 x 104.33 x 35.43 in  
4000 x 2650 x 900 mm
- Kind of usage : standing/sitting
- Required free space: radius 23.62 in / 600 mm around the sitting surface  
70.87 in / 1800 mm above the sitting surface
- Device space (LxWxH): 39.37 x 98.43 x 51.18 in  
1000 x 2500 x 1300 mm
- Dimensions shipping (LxWxH): 90.55 x 41.34 x 15.75 in  
2300 x 1050 x 400 mm
- Weight complete: 187. 39 lbs / 85 kg
- Age recommendation: from 2 years
- Number of user: 3
- For a maximum fall height of 1000 mm safety surface must be according to EN 1176-1:2008 4.2.8.5 table 4.
- Spare parts for Nestswing have to be purchased from the manufacture only.
- Certificated: AfPS GS 2019:01 PAK  
DIN EN 1176-1:2017

### 3. Installation

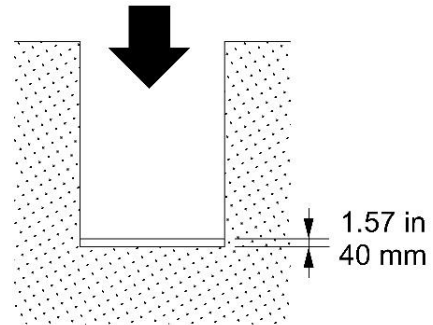
#### Step 1

Dig a pit  
39.37 x 27.56 in  
1000 x 700 mm



#### Step 2

1.57 in / 40 mm  
pour concrete

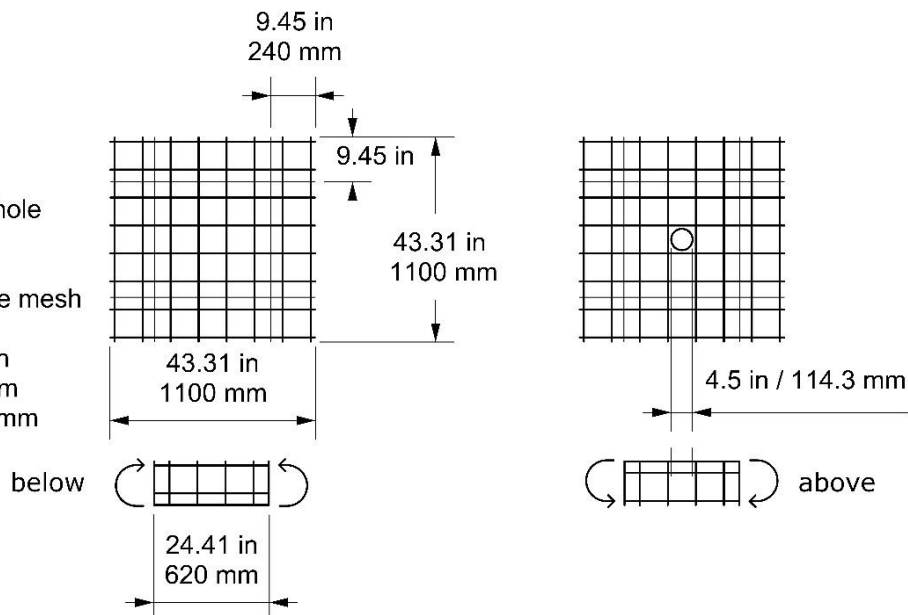


#### Step 3

Bending  
reinforcement  
cages

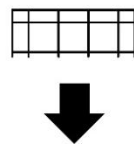
Possibly cut a hole  
for the post

Reinforcing wire mesh  
R 188 A  
43.31 x 43.31 in  
1100 x 1100 mm  
Ø: 0.236 in / 6 mm



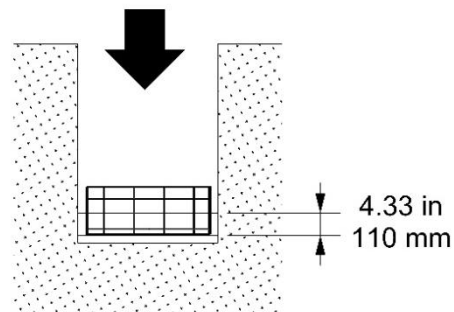
#### Step 4

Place the rein-  
forcement cages  
on top of one  
another and  
embed them



#### Step 5

Fill in another 4.33 in  
110 mm of concrete  
and allow it to set  
completely

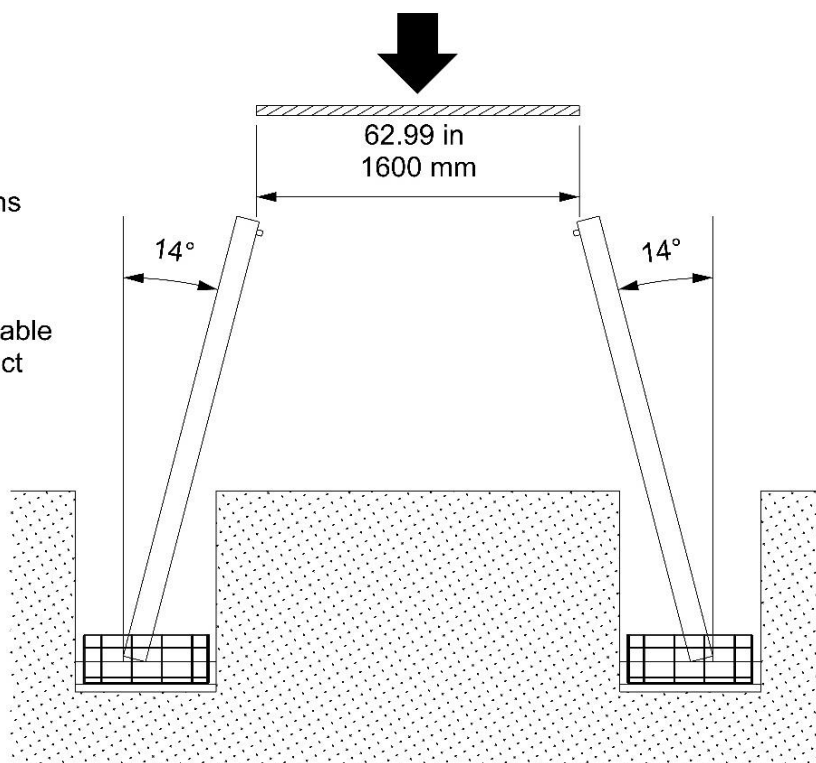


**Step 6**

Determine the center points of the foundations and place the posts centered on them.

A wooden board is suitable as a spacer for the exact inclination of the posts.

Swing joints must be placed correctly.

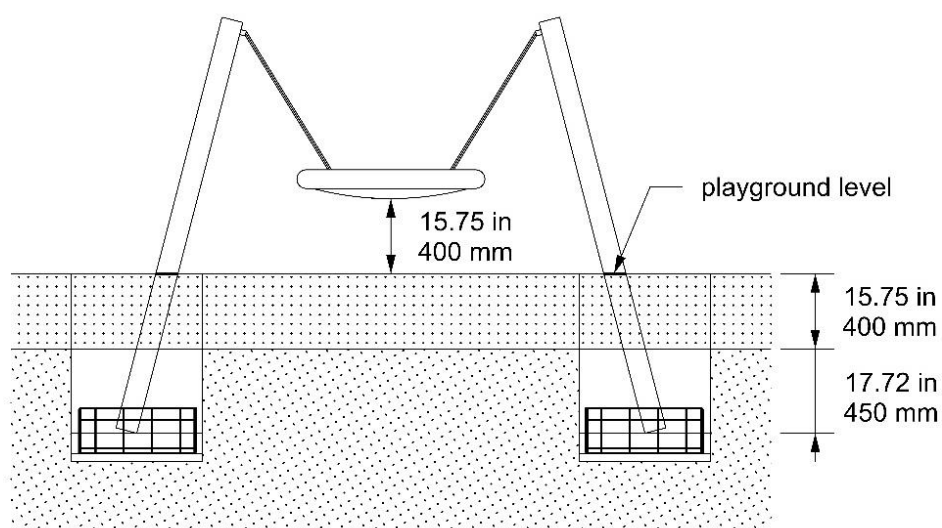
**Step 7**

Fill in another 450 mm of concrete and allow it to set completely.

Fill 400 mm fall protection or at least top floor

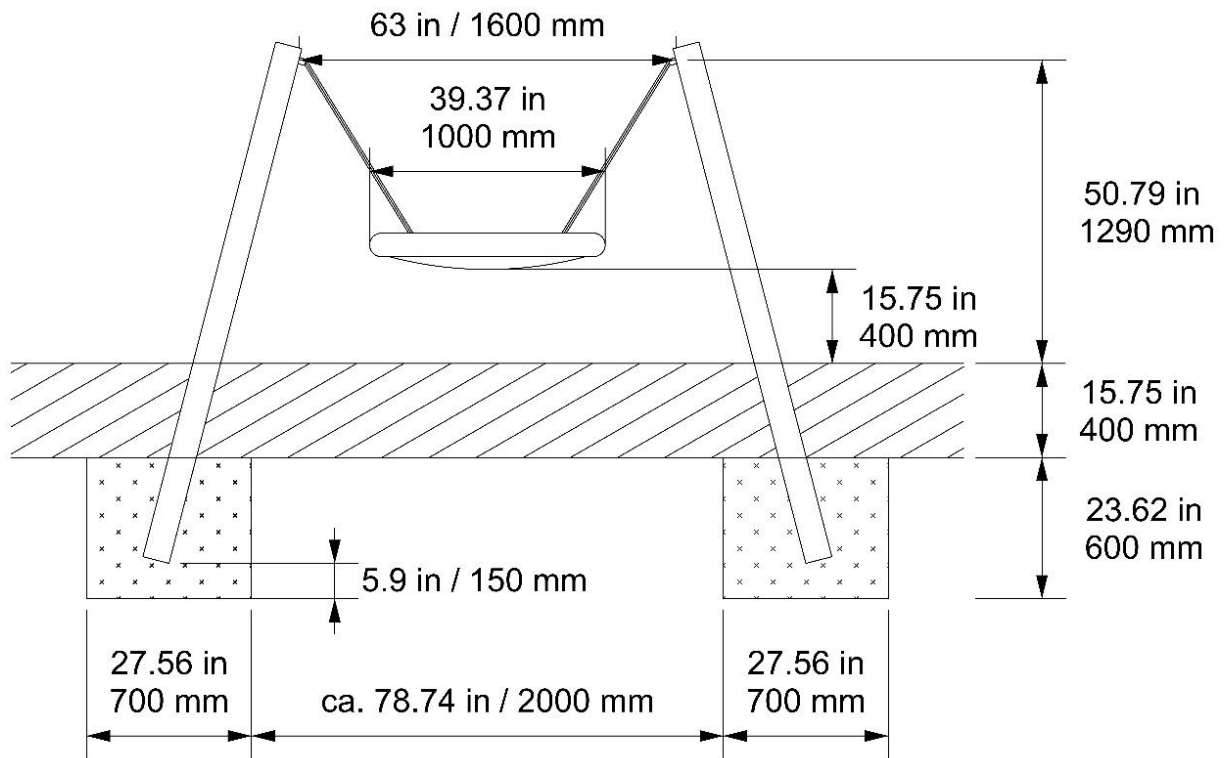
**Step 8**

Bolt the swing with the chain ends to the universal joints

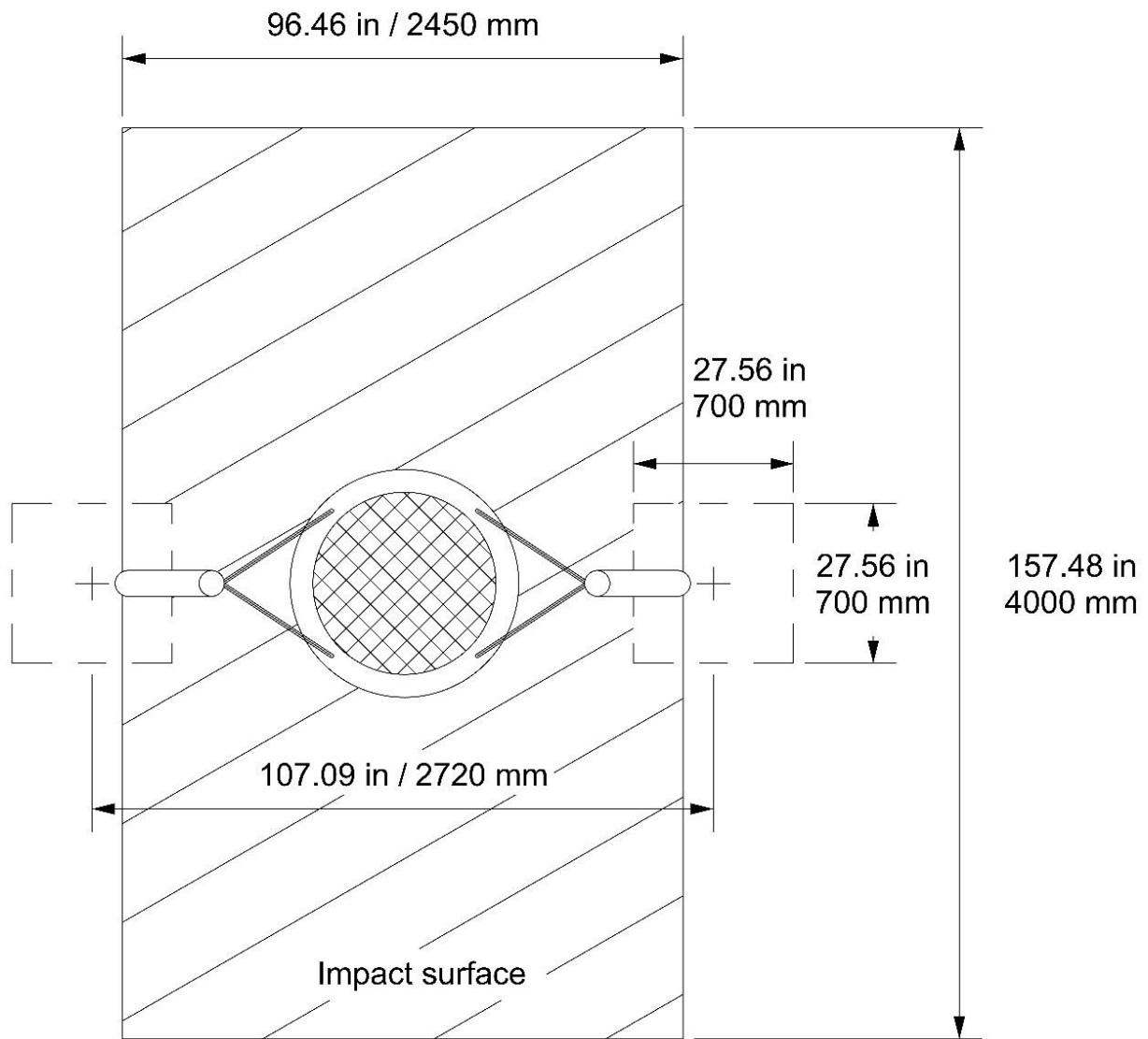


The height of the playing level is marked with a marker.  
This must be strictly adhered to.

## 4. Dimensions



*Front view with 15.75 in / 400 mm fall protection material*



*Position of the foundations with the impact surface*

## 5. Safety- and usernotes

- No fire, open light, burning cigarettes or similar, no knives or other sharp items

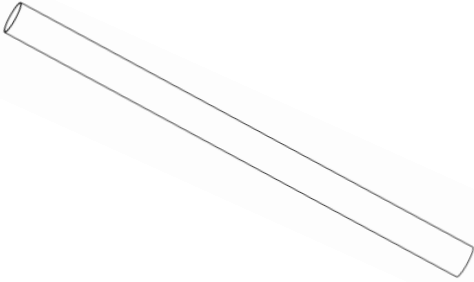
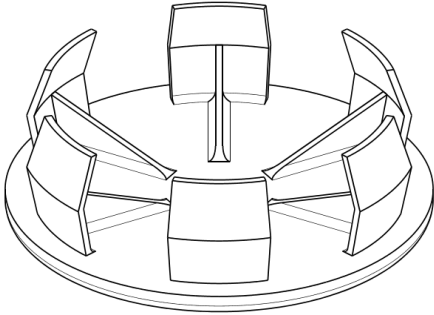
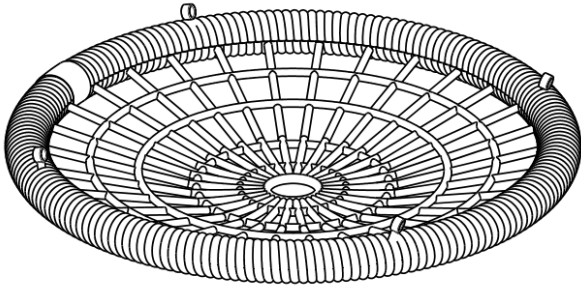
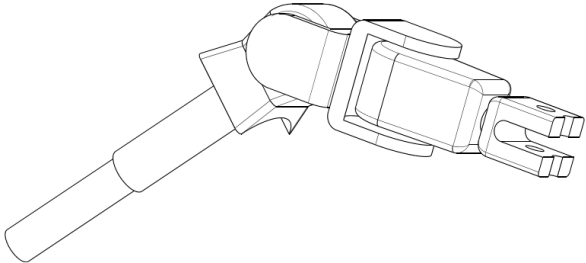



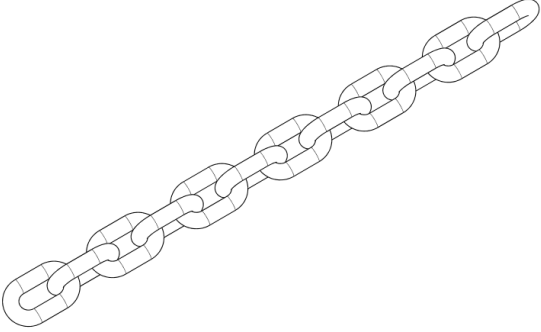
- No food or drinks
- No alcohol or drugs
- Shoes with flat sole
- Do not jump from nestswing or push other children

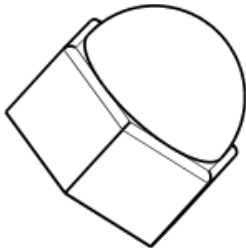

## **6. Changes**

August-12-2021: new layout

## 7. Replacement parts

<p><b>post</b></p> <p><b>114.3 x 4 x 2260 mm</b></p> <p><b>galvanized and powder coated</b></p> <p>Illustration can deviate</p>	
<p><b>cover for post</b></p> <p><b>D 114/1062 X 10/10</b></p> <p>Illustration can deviate</p>	
<p><b>Nestswing</b></p> <p>Illustration can deviate</p>	
<p><b>hings for</b></p> <p><b>Mini-Nest-Set</b></p> <p><b>bolt M16x140</b></p> <p>Illustration can deviate</p>	

<p><b>suspension Mini-Nest-Set</b></p> <p>Illustration can deviate</p>	
<p><b>chain 25 cm Mini Nestswing</b></p> <p>Illustration can deviate</p>	

<p><b>safety hat nut</b></p> <p><b>with clamping part M 16</b></p> <p>Illustration can deviate</p>	
<p><b>washer 0.669 in / 17 mm</b></p> <p>Illustration can deviate</p>	

## **8. Maintenance manual**

### **Special Information:**

- For heavily used or vandalized playgrounds, a daily inspection may be required.
- Control logs are to be kept.
- The checks must be carried out by knowledgeable staff.
- If safety-critical serious defects are detected during an inspection, they must be remedied immediately. If this is not possible, the system must be excluded from use, e.g. by decommissioning or dismantling.
- If a piece of equipment needs to be removed, e.g. for maintenance or repair, all anchors or foundations remaining in the ground should be removed or covered with covers. The device should be locked for use.
- It has been shown that one post items can pose higher risks to their stability; the stability test should therefore be carried out at least twice a year.
- The strength of the screw connection must be checked no later than 14 days after installation. Loose connections need to be tightened.

Maintenance manual		1 to 3 weeks (visual inspection)	1 to 3 months (operational inspection)	1 time per year (main inspection)
<i>All steps could also be necessary more often depending on the location / external influences</i>				
Check for loss or vandalism.		X	X	X
Check the surfaces of metal and plastic for sharp-edged elements, scratches, cracks or similar and, if necessary, grind or renew.		X	X	X
Replace missing parts.		X	X	X
Remove dirt and other objects (stones, broken glass, etc.).		X	X	X
Check moving parts for easy operation.			X	X
Check the coverage of the foundations.			X	X

Check all fasteners and attachments for tightness and loss, tighten or replace.		X	X
Check screw connection and tighten if necessary.		X	X
Check ropes and rope connections for tightness and loss.		X	X
<b>Maintenance manual</b>	1 to 3 weeks (visual inspection)	1 to 3 months (operational inspection)	1 time per year (main inspection)
<i>All steps could also be necessary more often depending on the location / external influences</i>			
Testing the stability of the device.		X	X
Check for traps.		X	X

Testing the fall protection coating.		X	X
Expose stand posts to the top of the foundation and check for corrosion.		X	X
Clean complete game device.			X
Check chain links for abrasion (1/3 maximum permissible).		X	X
Check ground clearance.		X	X



## Work documentation

Date	Kind of work	Name, Sign